

THE LEIGHTON *at Country Club Estates*

1.5 Story • 2,562 sq.ft.



AMERICAN CRAFTSMAN elevation shown with optional cultured stone.



AMERICAN CRAFTSMAN
Shown with 2-car garage.



AMERICAN FARMHOUSE
Shown with 2-car garage.



Marketing Disclaimer: The renderings and visual media used in our marketing are for illustrative purposes only. They depict options and upgrades that are available to purchase but may not be included in the standard feature package. For a full list of our models, standard features and available options contact a member of our sales team. All plans and specifications are believed correct at time of publication, however accuracy is not fully guaranteed. All dimensions, sizes, and descriptions shown are approximate. Amedore Homes et al, reserves the right to revise content without notice or obligation.

©Amedore Homes, Inc 2013

518.456.1010
amedorehomes.com

Amedore INC.
G R O U P
Surround Yourself with Excellence!

THE LEIGHTON *at Country Club Estates*

1.5 Story • 2,562 sq.ft. • 3 Bedrooms • 3.5 Baths • Study • Covered Lanai • Opt. Finished Basement • 3-Car Garage

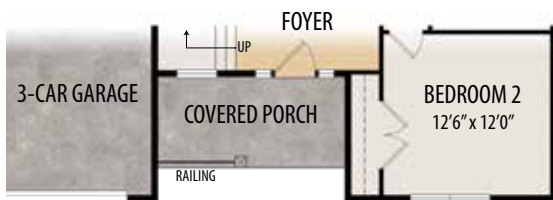


Kitchen showing 12' ceiling height, double wall oven, and extended island.



Second Floor

- Private bedroom with walk-in closet and bathroom, ideal for a guest suite.



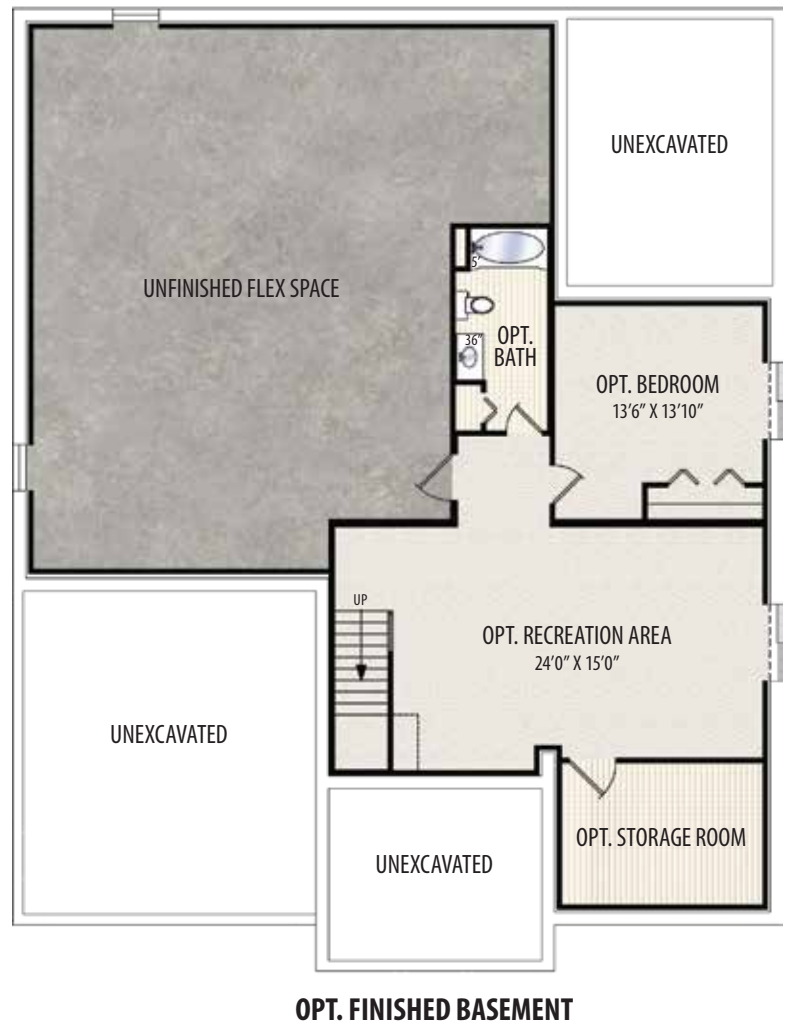
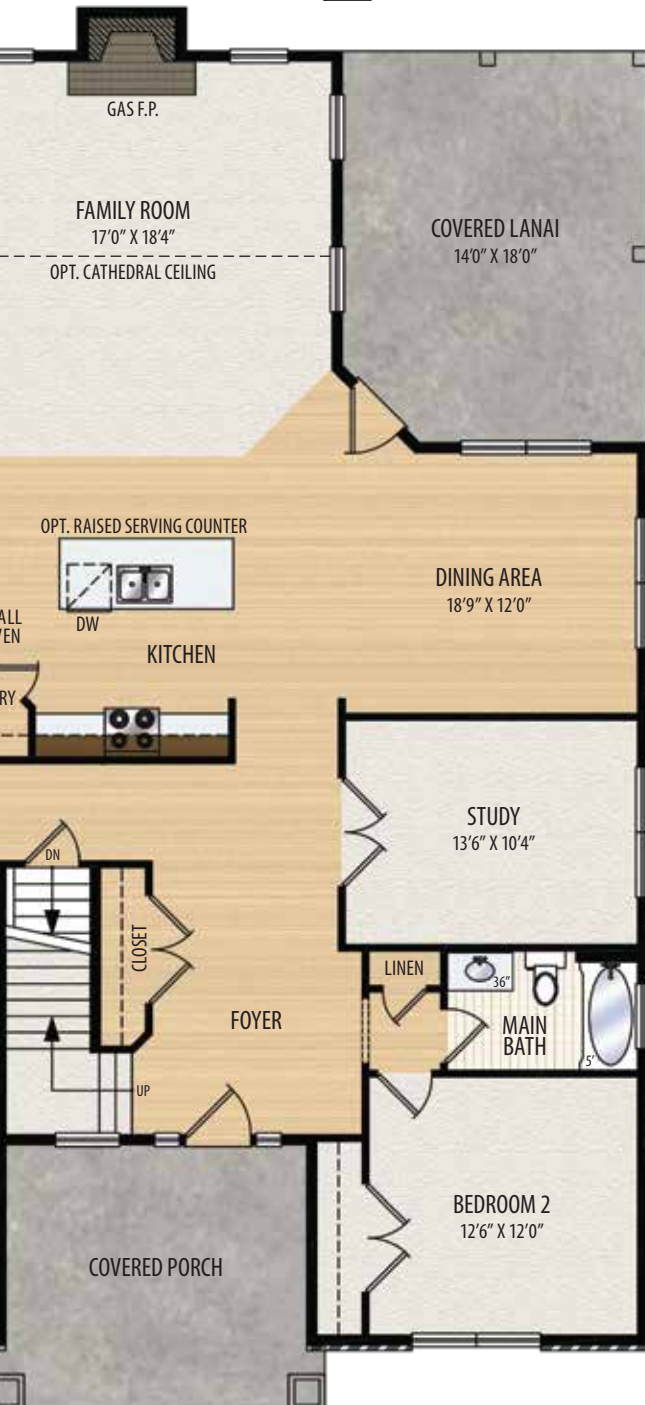
AMERICAN FARMHOUSE ELEVATION



Marketing Disclaimer: The renderings and visual media used in our marketing are for illustrative purposes only. They depict options and upgrades that are available to purchase but may not be included in the standard feature package. For a full list of our models, standard features and available options contact a member of our sales team. All plans and specifications are believed correct at time of publication, however accuracy is not fully guaranteed. All dimensions, sizes, and descriptions shown are approximate. Amedore Homes et al, reserves the right to revise content without notice or obligation.

First Floor

- Magnificent ranch floorplan with a modern, open-flow living area.
- Gourmet kitchen with center island and built-in pantry.
- Elegant covered lanai for outdoor entertaining.
- Sumptuous master suite with an optional gas fireplace and sitting area expansion.



AMERICAN CRAFTSMAN ELEVATION

518.456.1010
amedorehomes.com

Amedore INC.
G R O U P
Surround Yourself with Excellence!

THE LEIGHTON *at Country Club Estates*

1.5 Story • 2,562 sq.ft.



Features at a Glance

A full listing of all included features is available in our *Country Club Estates Included Features* handout available from one of our Team.



- Efficient, Energy Smart construction.
- Estate Series landscaping package with underground lawn irrigation system.
- Brick OR cultured stone veneers on portions of front elevations.*
- Fully framed, insulated basement walls.
- Side entry, 3-car garage* with insulated garage door and service door.
- Garage sheetrocked with one coat of tape.
- 9ft. first floor ceilings.
- Pella® “Low-E” tilt-in, double-hung windows with screens and grills between glass on ALL windows.
- Heat-N-Glow® zero clearance, direct-vent gas fireplace with designer ceramic tile surround and custom built mantle.
- Oak tread staircase* and solid oak flooring in foyer, kitchen, dinette area, and dining room.*
- 8lb padding under all carpeted areas for an ultra-plush feel.
- Whirlpool® gourmet kitchen appliance package.
- Designer ceramic tile backsplash and granite countertops in the kitchen.
- Jetted-tub with designer ceramic tile backsplash in the master bathroom.*
- Ceramic tile shower enclosure with sliding glass door in master bathroom.*
- 6-year limited builder warranty.

*Per plan, and homesite.



Marketing Disclaimer: The renderings and visual media used in our marketing are for illustrative purposes only. They depict options and upgrades that are available to purchase but may not be included in the standard feature package. For a full list of our models, standard features and available options contact a member of our sales team. All plans and specifications are believed correct at time of publication, however accuracy is not fully guaranteed. All dimensions, sizes, and descriptions shown are approximate. Amedore Homes et al, reserves the right to revise content without notice or obligation.

©Amedore Homes, Inc 2013

518.456.1010
amedorehomes.com

Amedore★
INC.
G R O U P
Surround Yourself with Excellence!